

Jurong East / West Condominium Propertyguru listing

Leasehold 99 years min. 1300 sqft 3 bedrooms



The Floravale
Condominium
218 Westwood Avenue
1400 sqft · S\$ 657.14 psf
3 🛏 2 🚿

S\$ 920,000

Mark Lim Chee Tong · 4 days



The Floravale
Condominium
218 Westwood Avenue
1400 sqft · S\$ 657.14 psf
3 🛏 2 🚿

S\$ 920,000

Mark Lim Chee Tong · 4 days



The Floravale
Executive Condominium
222 Westwood Avenue
1410 sqft · S\$ 707.64 psf
3 🛏 3 🚿

S\$ 997,777

Jeanette CHOW · 2 days



The Floravale
Condominium
218 Westwood Avenue
1410 sqft · S\$ 709.14 psf
3 🛏 3 🚿

S\$ 999,888

Raymond Kok Tect Kheong · 2 weeks



The Floravale
Executive Condominium
222 Westwood Avenue
1765 sqft · S\$ 617.56 psf
3 🛏 3 🚿

S\$ 1,090,000

Florence Cheong · 3 weeks





The Floravale
Executive Condominium
218 Westwood Avenue
1734 sqft · S\$ 720.88 psf
3 🛏 3 🚿

S\$ 1,250,000

Alicia Xiao · 2 weeks



Lakeholmz
Condominium
82 Corporation Road
1593 sqft · S\$ 790.96 psf
2 🛏 2 🚿

S\$ 1,260,000

Mary Yong 杨惠娇 · 1 week



Westwood Residences EC
Executive Condominium
Westwood Avenue
1475 sqft · S\$ 879.46 psf
5 🛏 4 🚿

S\$ 1,297,200

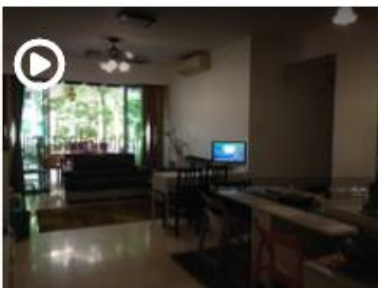
Alvin Teo · 2 weeks



Summerdale
Condominium
8 Boon Lay Drive
2024 sqft · S\$ 681.82 psf
3 🛏 3 🚿

S\$ 1,380,000

Rick Yang · 1 month



Lakeholmz
Condominium
86 Corporation Road
1776 sqft · S\$ 844.59 psf
3 🛏 2 🚿

S\$ 1,500,000

Eugene Leong · 2 days





Lakeholmz
Condominium
86 Corporation Road
1776 sqft · S\$ 844.59 psf
3 2

S\$ 1,500,000

Lee Boon Piau Alan · 1 day



Lakeholmz
Condominium
84 Corporation Road
1776 sqft · S\$ 844.59 psf
3 3

S\$ 1,500,000

Edwin Lee · 12 hours

